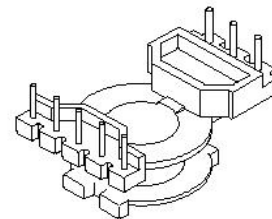
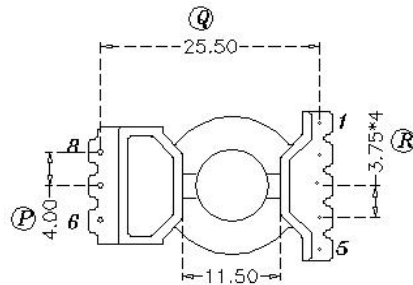
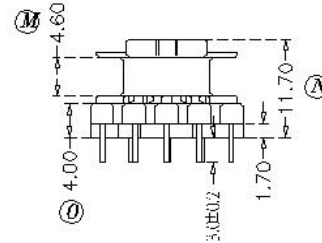
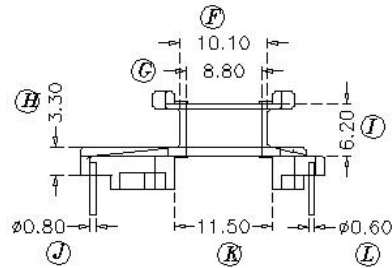
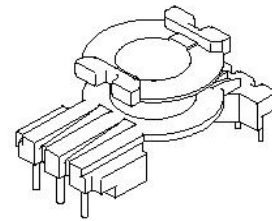
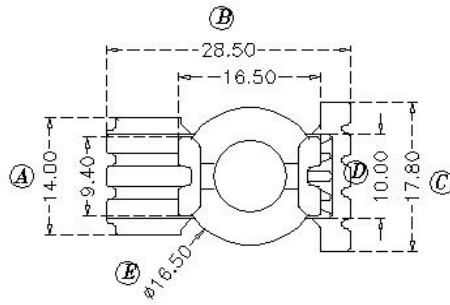
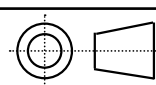


**Core Fit Reference**

<b>1462</b>	<b>Forroxcube:RM8-***_****</b>	<b>Magnetics:NX-42316-UG</b>
	<b>TDK:XXXXRM8Z-XX</b>	<b>Simens:B65811</b>

INSERT DEPTH 1.5MM



	Scale	Tolerance (mm)			Terminal Plating	Terminal Material	No of Terminals	
	None	0-4mm +/-0.1	4-16mm +/-0.2	16-60mm +/-0.3	100% Sn	CP Wire	8	

**LODESTONE PACIFIC**  
  
**CHINA FACTORY**  
[www.lodestonepacific.com](http://www.lodestonepacific.com)

<b>Molding Material</b>	<b>UL File No.</b>	<b>Rating</b>	<b>Class</b>
PM-9820	E41429	UL94-V0	N
<b>Bobbin Part Number</b>			<b>Rev No</b>
B-RM8V-8-1-PH2			1