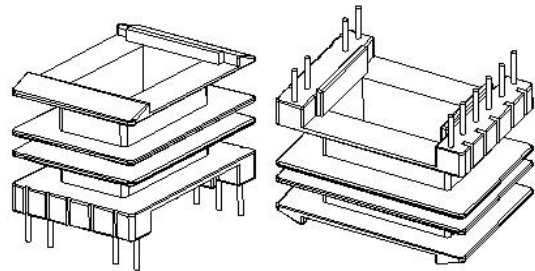
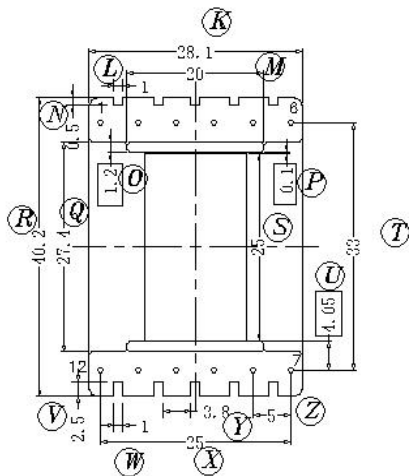
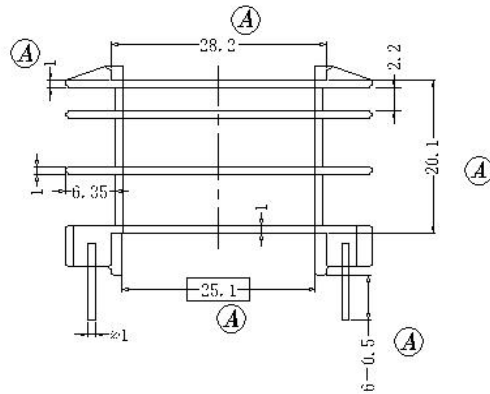
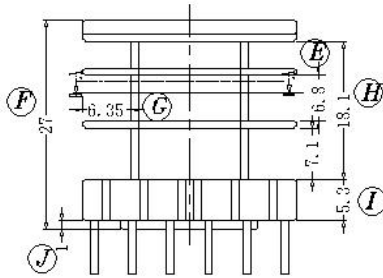
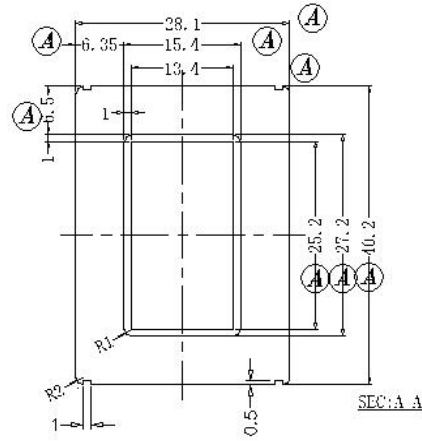
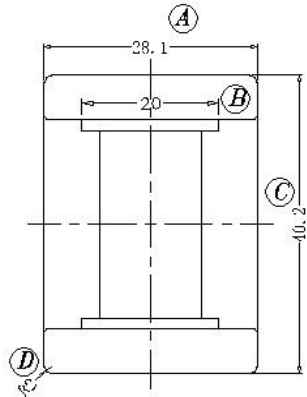


**Core Fit Reference**

<b>1024</b>	<b>EI-41</b>	<b>EI-50</b>
	<b>Metric</b>	<b>American</b>



	<b>Scale</b>	<b>Tolerance (mm)</b>			<b>Terminal Plating</b>	<b>Terminal Material</b>	<b>No of Terminals</b>	
	None	0-4mm +/-0.1	4-16mm +/-0.2	16-60mm +/-0.3	100% Sn	CP Wire	12	



<b>Molding Material</b>	<b>UL File No.</b>	<b>Rating</b>	<b>Class</b>
PBT	E59481	UL94-V0	B
<b>Bobbin Part Number</b>			<b>Rev No</b>
B-EIM41X25-7V-12-3-PBT			1