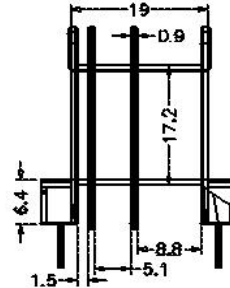
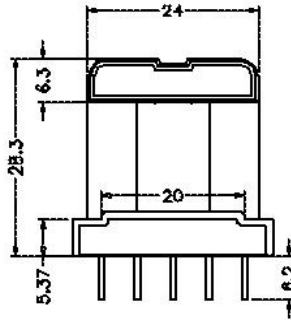


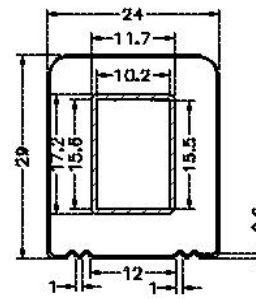
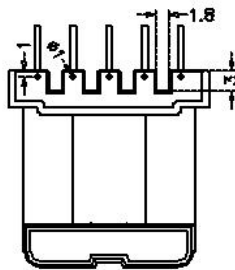
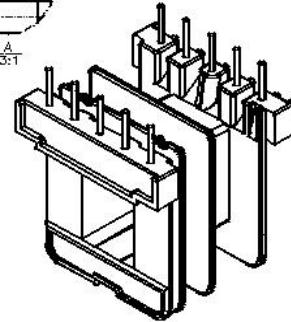
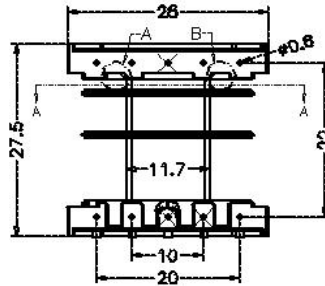
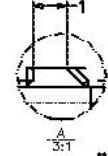
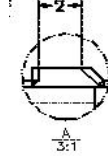
**Core Fit Reference**

1360		EI-35 Metric	EI-37 American
------	--	-----------------	-------------------

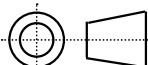


BEFORE REVISION

AFTER REVISION



SECTION A-A

	Scale	Tolerance (mm)			Terminal Plating	Terminal Material	No of Terminals	
	None	0-4mm +/-0.1	4-16mm +/-0.2	16-60mm +/-0.3	100% Sn	CP Wire	10	

**LODESTONE PACIFIC**  
 **CHINA FACTORY**  
[www.lodestonepacific.com](http://www.lodestonepacific.com)

Molding Material	UL File No.	Rating	Class
PBT	E59481	UL94-V0	B
<b>Bobbin Part Number</b>			Rev No
<b>B-EIM35X15.5H-10-3-PBT</b>			<b>1</b>