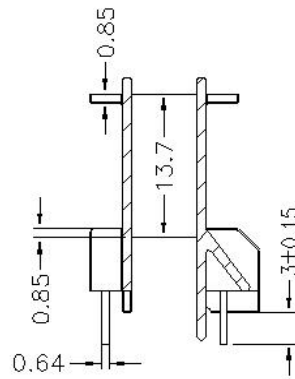
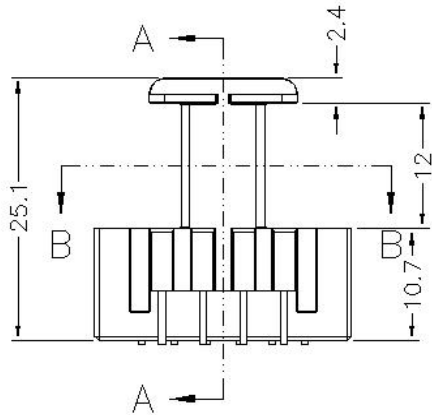
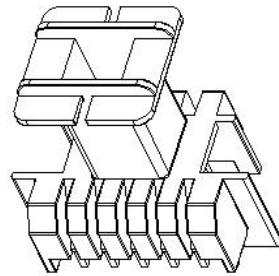
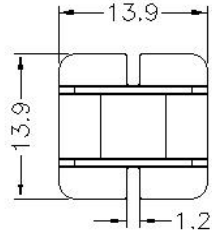


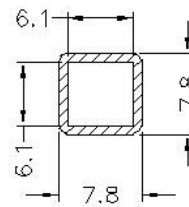
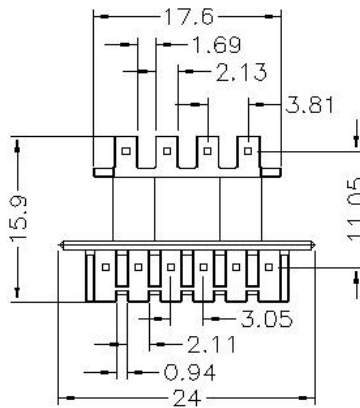


**Core Fit Reference**

<b>1155</b>	Forroxcube:E20/10/6-****	TDK:PCXXEF25-2	
	Simens:B66311	Ferrite intl:20-10-06	



SECTION A-A



SECTION B-B

	Scale	Tolerance (mm)			Terminal Plating	Terminal Material	No of Terminals	
	None	0-4mm +/-0.1	4-16mm +/-0.2	16-60mm +/-0.3	100% Sn	CP Wire	9	



Molding Material	UL File No.	Rating	Class
FR530	E41938	UL94-V0	N
<b>Bobbin Part Number</b>			Rev No
<b>B-EF20V-9-1-PET</b>			<b>1</b>