

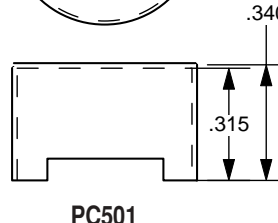
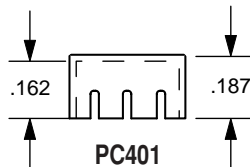
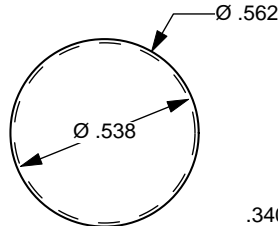
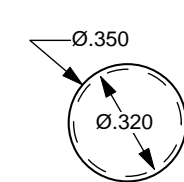
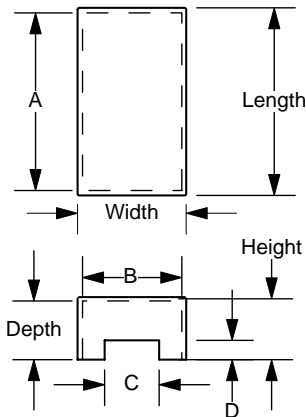
POTTING CUPS & COVERS

Material: Diallyl Phthalate (DAP) (Black)

Rating: UL94-V0

Application: For potting and sealing toroids and components on surface mount devices. This protects the component-to-mount connections, facilitates part number marking and automatic pick and place. All cups and covers are sold separately. Custom sizes are available.

The Cup or Cover part number will match the mount. For example, PC280 will fit STM280-8, and STM350-24 goes with cover PC350/123. The number after the slash indicates the cup's height.



Cup Part No.	Mount No.	Length	Width	Height	Depth	A	B	C	D	Mat'l
PC165-6/115	SMD165-6	.305 [7.7]	.260 [6.6]	.115 [2.9]	.095 [2.4]	.265 [6.7]	.220 [5.6]	----	----	DAP
PC165-6/160	SMD165-6	.305 [7.7]	.260 [6.6]	.160 [4.1]	.140 [3.5]	.250 [6.4]	.220 [5.6]	----	----	DAP
PC165-6/175	SMD165-6	.305 [7.7]	.260 [6.6]	.175 [4.4]	.155 [3.9]	.265 [6.7]	.220 [5.6]	----	----	DAP
PC165-8/155H	SMD165-8	.506 [12.8]	.265 [6.7]	.155 [3.9]	.135 [3.4]	.466 [11.8]	.224 [5.7]	.195 [4.9]	.125 [3.2]	DAP
PC165-16/160H	SMD165-16	.790 [20.1]	.265 [6.7]	.160 [4.1]	.140 [3.5]	.750 [19.1]	.224 [5.7]	.170 [4.3]	.136 [3.4]	DAP
PC200-14/108H	SMD200-14	.505 [12.8]	.293 [7.4]	.108 [2.7]	.089 [2.2]	.467 [11.8]	.251 [6.4]	.157 [4.0]	.060 [1.5]	DAP
PC200-20/108H	SMD200-20	.631 [16.0]	.291 [7.4]	.108 [2.7]	.089 [2.2]	.593 [15.1]	.251 [6.4]	.157 [4.0]	.060 [1.5]	DAP
PC266-16/154H	SMD266-16	.933 [23.7]	.381 [9.7]	.154 [3.9]	.117 [3.0]	.880 [22.4]	.350 [8.9]	.295 [7.5]	.165 [4.2]	DAP
PC266-16/242H	SMD266-16	.933 [23.7]	.381 [9.7]	.242 [6.1]	.206 [5.2]	.880 [22.4]	.350 [8.9]	.295 [7.5]	.165 [4.2]	DAP
PC280	STM280-8	.400 [10.2]	.400 [10.2]	.210 [5.3]	.190 [4.8]	.365 [9.3]	.365 [9.3]	----	----	DAP
PC290-16/160H	SMD290-16	1.01 [25.6]	.392 [9.9]	.160 [4.1]	.120 [3.0]	.968 [24.6]	.352 [8.9]	.315 [8.0]	.120 [3.0]	DAP
PC350/123	STM350-24	.457 [11.6]	.457 [11.6]	.123 [3.1]	.103 [2.6]	.415 [10.6]	.415 [10.6]	----	----	DAP
PC390	STM390-8	.525 [13.3]	.475 [12.1]	.280 [7.1]	.250 [6.3]	.430 [10.9]	.480 [12.2]	----	----	DAP
PC430-24/200H	SMD430-24	1.27 [32.3]	.565 [14.4]	.200 [5.1]	.180 [4.6]	1.23 [31.3]	.531 [13.5]	.488 [12.4]	.161 [4.1]	DAP
PC581	STM581-8	.770 [19.6]	.650 [16.5]	.280 [7.1]	.250 [6.3]	.720 [18.3]	.600 [15.2]	----	----	DAP
PC581/330	STM581-8	.770 [19.6]	.650 [16.5]	.330 [8.4]	.300 [7.6]	.720 [18.3]	.600 [15.2]	----	----	DAP
PC880	STM880-8	.925 [23.4]	.925 [23.4]	.365 [9.3]	.335 [8.5]	.875 [22.2]	.875 [22.2]	----	----	DAP